



RACK ENGINEERING CAPABILITIES

RACK ENGINEERING DIVISION, LLC

OUR COMPANY PROVIDES COMPREHENSIVE CAPABILITIES

Rack Engineering Division, LLC is a manufacturer of heavy duty, customer storage solutions established through a comprehensive set of capabilities in metal fabrication and components for material handling equipment.

Metal Fabrication Capabilities

Rack Engineering Division, LLC is empowered with the equipment and work cells to manage the fit, form and function of range of materials and specifications with machining, cutting, punching, shearing, forming, bending, welding and finishing.

Materials	Mild steel, stainless steel, aluminum, Suralloy, AR plate, Galvanized
Type	Flat bar, grating, tread plate, expanded metal, perforated
Bending & forming	Up to 160" L
Laser & etching	Up to 240" L, 79" W
Lathe	Up to 6" L for up to 18" diameter; Up to 80 L for up to 7 1/2" diameter
Milling	Up to 24" W, Up to 84" L
Punching	Up to 60" W
Shearing	Up to 144" L
Cope, Drill, Tap, Line Burn, Roll, Saw	
Powder coating	
Sheet & plate rolling	
Welding	

ABOUT US

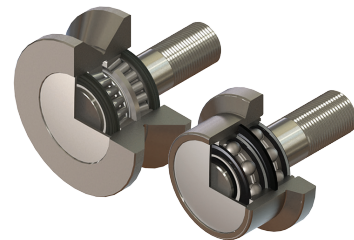
Rack Engineering Division, LLC specializes in the manufacturing of racking and storage solutions that are heavy duty and constructed to endure high capacities and tough industrial environments. Rack Engineering Division, LLC was originally founded in 1935 in response to an industry need for cost effective solutions to storage and handling problems for raw materials and tooling while helping customers save time and space by optimizing workflow. Since this time we continue to solve high capacity storage challenges with a quality product supported by a wide network of distributors and integrators throughout North America.

BEARINGS & ASSEMBLIES CAPABILITIES

Rack Engineering Division, LLC is equipped with components and assemblies for a range of material handling equipment all designed and manufactured in our facilities.

Radial ball bearings and tapered roller bearings to last in the most demanding environments.

PCI Track Roller Line



PCI Load Bearing Roller Assemblies

