



# SHEETMASTER 100 WORKSHEET

## RACK ENGINEERING DIVISION, LLC

### PRODUCT DESCRIPTION

Depth \_\_\_\_\_

Width \_\_\_\_\_

Stack height \_\_\_\_\_

Weight \_\_\_\_\_

Number of shelves \_\_\_\_\_

Shelf depth \_\_\_\_\_

Shelf width \_\_\_\_\_

Clearance needed (*between shelves*) \_\_\_\_\_

Folding \_\_\_\_\_ Bi-Directional \_\_\_\_\_ Rear loading \_\_\_\_\_

*\*\*Standard shelf capacity is 5,500 lbs.*

#### Building restrictions

Floor space available \_\_\_\_\_

Ceiling height \_\_\_\_\_

Height below crane hook \_\_\_\_\_

Notes \_\_\_\_\_

### CONTACT

Company \_\_\_\_\_

Contact \_\_\_\_\_

Phone Number \_\_\_\_\_

Email \_\_\_\_\_

Quote Date \_\_\_\_\_

Today's Date \_\_\_\_\_

### OPTIONS & ACCESSORIES

- Bi-Directional Sheetmaster
- Bi-Directional folding Sheetmaster
- Folding Sheetmaster
- Fork lift risers
- Greater capacities
- Customizable height
- Rear loading Sheetmaster
- Standard 3 to 8 Shelves



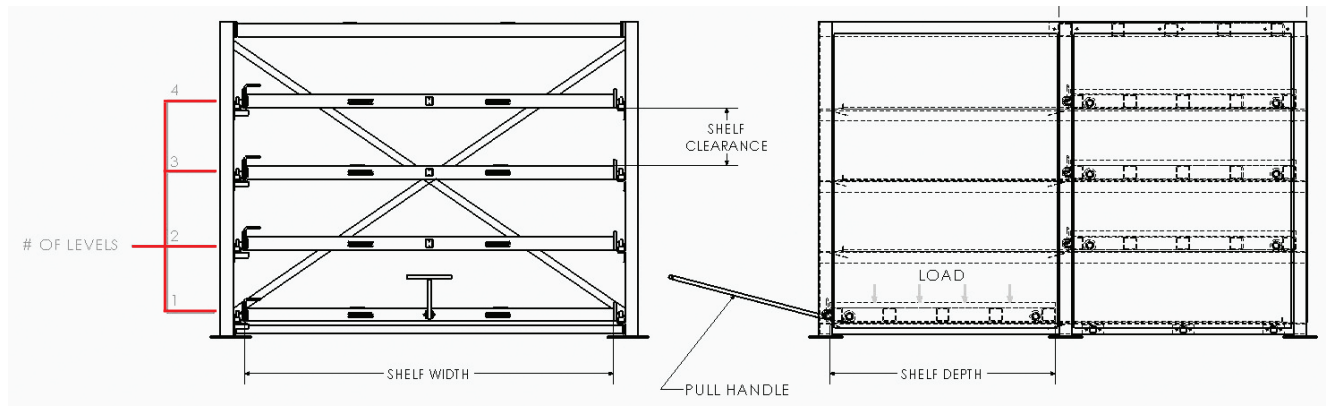
# SHEETMASTER 100 WORKSHEET

## RACK ENGINEERING DIVISION, LLC

### SPECIFICATIONS

#### GENERAL

Model Number	Capacity per Shelf	Upright Height	Shelf Size (D x W)	Overall Dimensions (D x W)	Shelf Clearance
SM84-4896-4	5500 lbs.	7'	48" x 96"	105.5" x 111"	11 9/32"
SM84-48120-5	5500 lbs.	7'	48" x 120"	105.5" x 135"	11 1/2"
SM84-60120-6	5500 lbs.	7'	60" x 120"	129.5" x 135"	9"
SM84-60144-7	5500 lbs.	7'	60" x 144"	129.5" x 159"	7 3/16"
SM84-72144-8	5500 lbs.	7'	72" x 144"	153.5" x 159"	5 7/8"



### PART NUMBER EXAMPLE

**F S M 8 4 - 4 8 9 6 - 4**

