

Rack Bed Glide

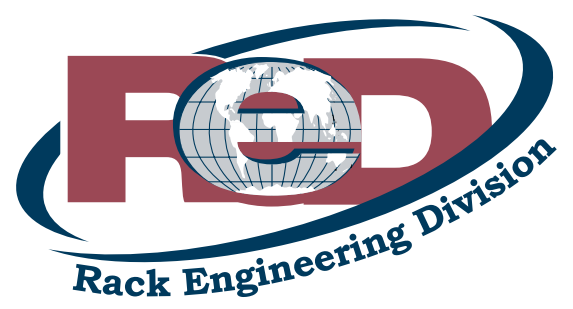
Toll Free: 800-245-6890
P.O. Box 205
Alpena, Michigan 49707
phone: 989-358-7050
fax: 989-358-7055
www.rack-eng.com



Easy Access to Products
Welded Solid
High Quality
Industrial Strength

Up to 3000 lb Capacity
Choose your lock locations
Choose Shelf Size in 1" increments
Optional Rack Step

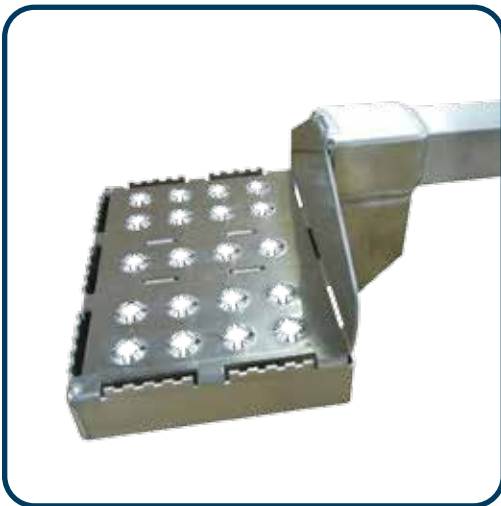
For More Information and Options Call 800-245-6890
www.rack-eng.com



Rack Step



**Powder Coated
Mild Steel**



Aluminum

Material Options

- **Aluminum**
- **Powder Coated Mild Steel**
- **Stainless Steel**

By merging durability, strength, and convenience, the Rack Step hitch step is a great solution for your vehicle access needs. Quick and seamless to install, custom fit to your vehicle and with options available for most popular full-size pickups, utility trucks, or vans.

There are several benefits to be gained by installing a Rack Step, including safer access to your vehicle. It can also help to minimize wear and tear on the body of your truck as well as your own back and knees. It's a great way to save time and energy loadings things into, and taking things out of, your vehicle.

**Optional Rack Step
Up to 500 lb Capacity**

Toll Free: 800-245-6890
P.O. Box 205
Alpena, Michigan 49707
phone: 989-358-7050
fax: 989-358-7055
www.rack-eng.com

